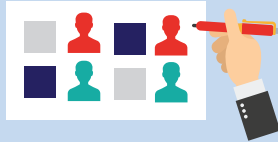


# BALLOT INSTRUCTIONS

CITY - SPECIAL ELECTION • NOVEMBER 2, 2021

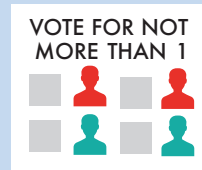
## TO VOTE



Completely darken the box opposite your choice, as shown above

Use a blue or black ink pen to mark your ballot. DO NOT USE ANY OTHER INK COLOR!

## VOTING BY OFFICE



DO NOT vote for more candidates than indicated under each office title

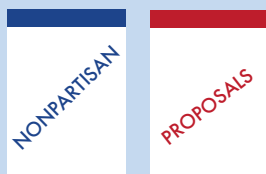
## WRITE-IN CANDIDATES



To vote for a candidate whose name is not printed on the ballot, write or place the name of the candidate in the space provided and darken the voting target area.

Do not cast a write-in vote for a candidate whose name is already printed on the ballot for that office.

## BALLOT SECTIONS



Nonpartisan and Proposal sections of the ballot must be voted separately

## MADE A MISTAKE?



Don't attempt to erase or correct any marks made in error. Simply return it to the Election Official and obtain a new ballot