

Changing Orthophotography Display

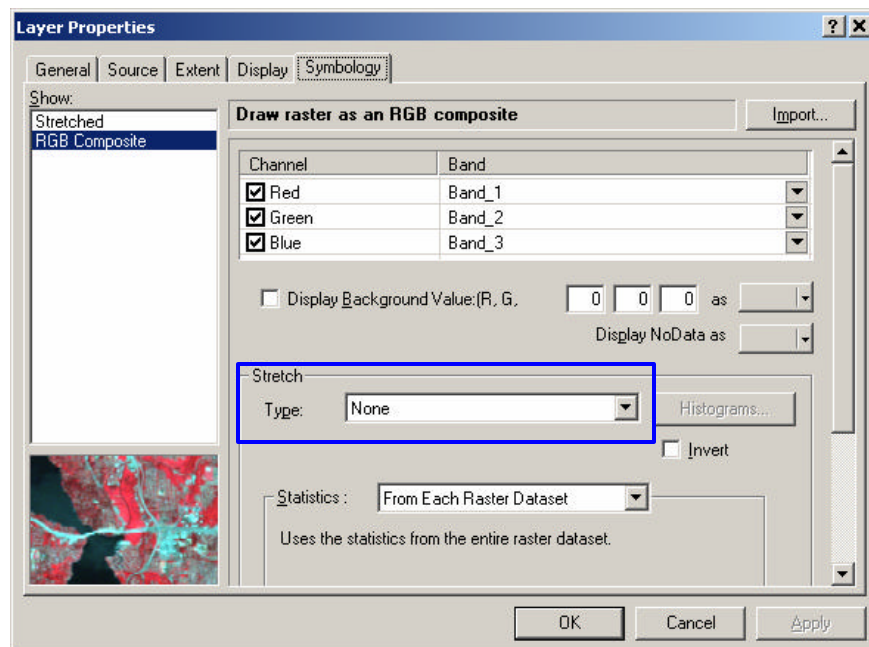
Updated: June 13, 2006

Background:

The 2005 orthophotography may not meet quality expectations, especially when the imagery is printed. The sensor used to capture the 2005 imagery generally creates darker imagery than we have viewed in past years when a traditional camera system was used. ArcMap provides functionality to change imagery display. The adjustments made in ArcMap do not affect the underlying imagery. A pleasing color orthophoto is a personal preference, but you can follow the procedures below to change the “look-and-feel” of the imagery until you find an option that you prefer.

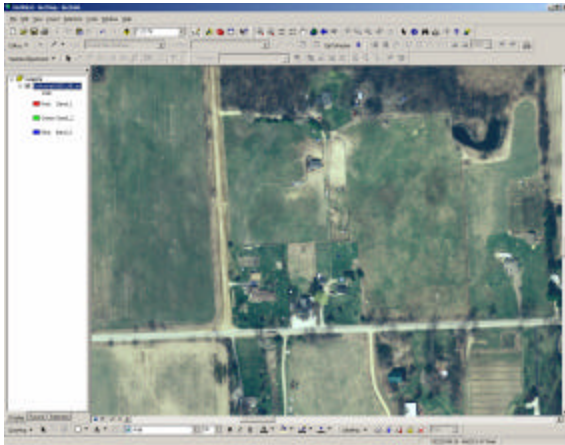
Procedures:

1. Open ArcMap
2. Add an orthophotography mosaic (in either MrSID or SDE format) to the map
3. **Right-click** on the image name → Select **Properties**
4. Click the **Symbology** tab
 - a. Ensure the **RGB Composite** option is highlighted on the left side of the window
 - b. By default, **None** is shown in the **Type:** drop-down dialog box

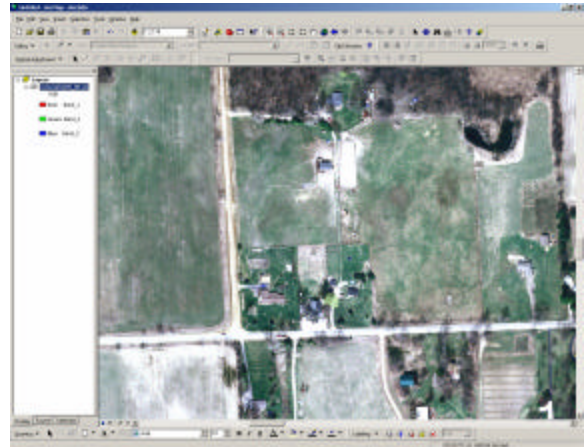


- c. Select a different **Type** from the drop-down
- d. Click **Apply** to preview the change in the Data View (several examples are shown on the next page)

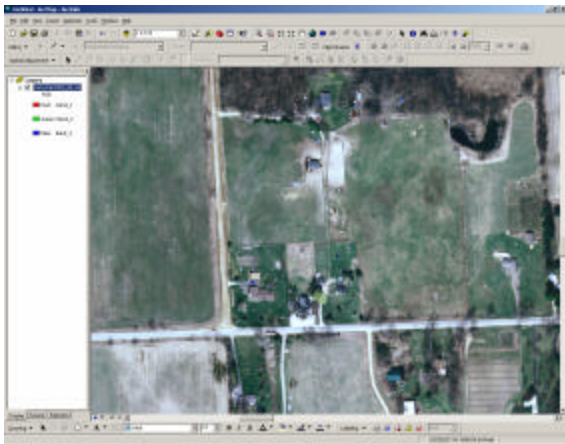
Type: None



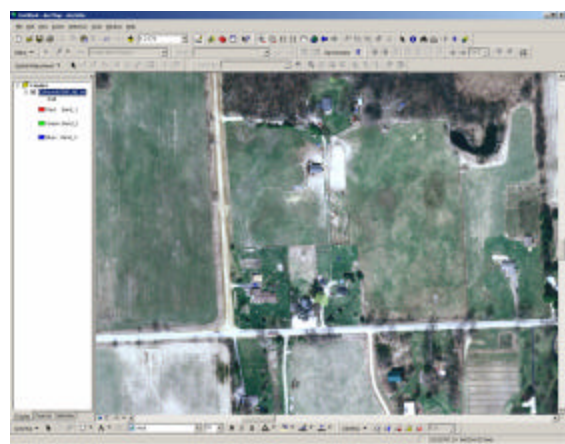
Type: Standard Deviations
N = 2



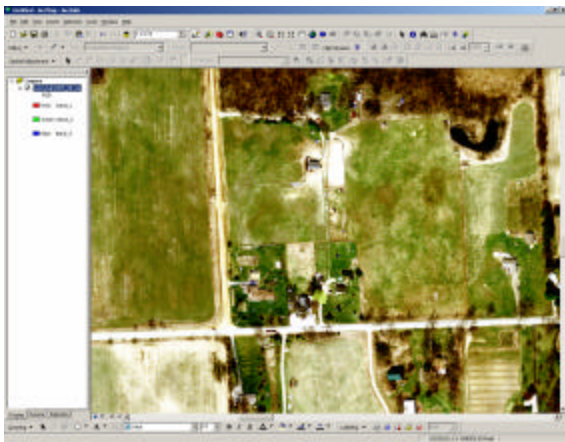
Type: Standard Deviations
N = 3



Type: Standard Deviations
N = 2.5



Type: Histogram Equalize



Type: Minimum-Maximum

