

# How to Create a New Shapefile

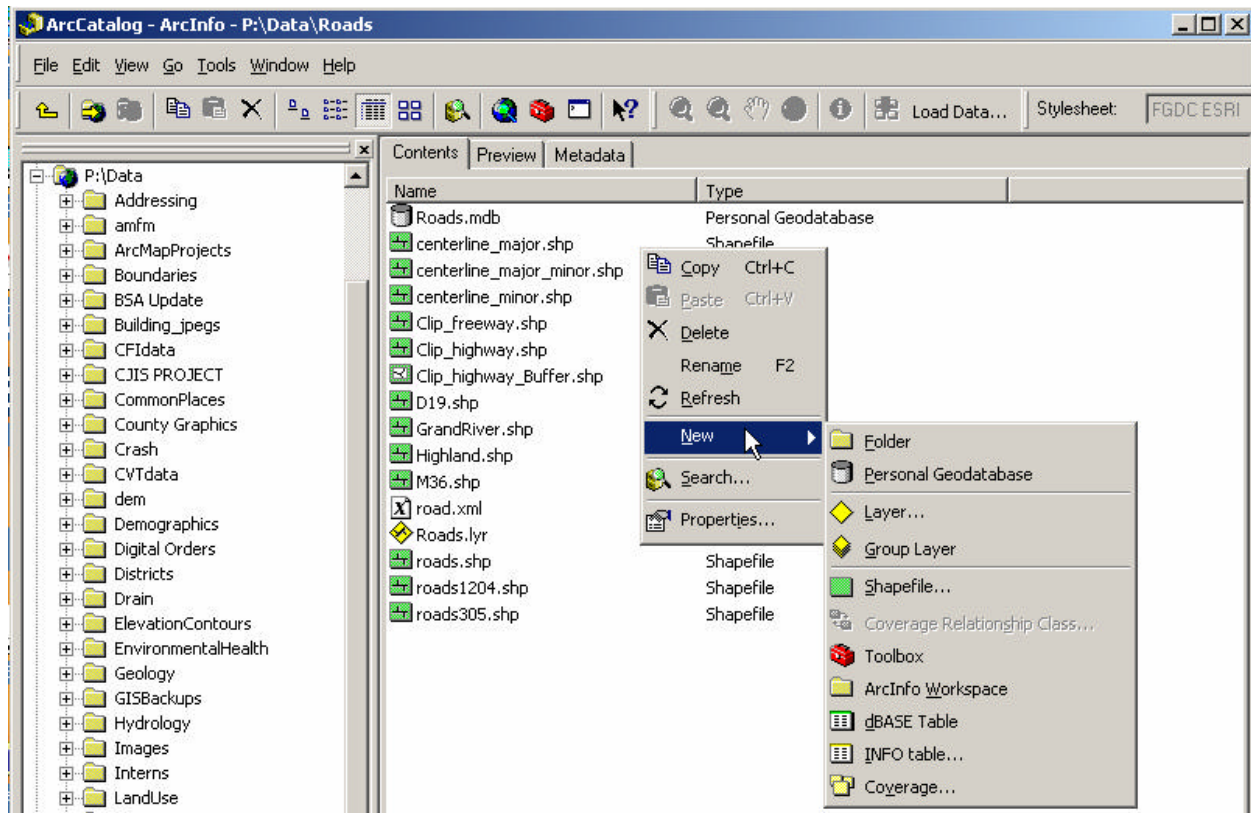
Updated: April 2, 2007

Software: ArcCatalog 9.1

---

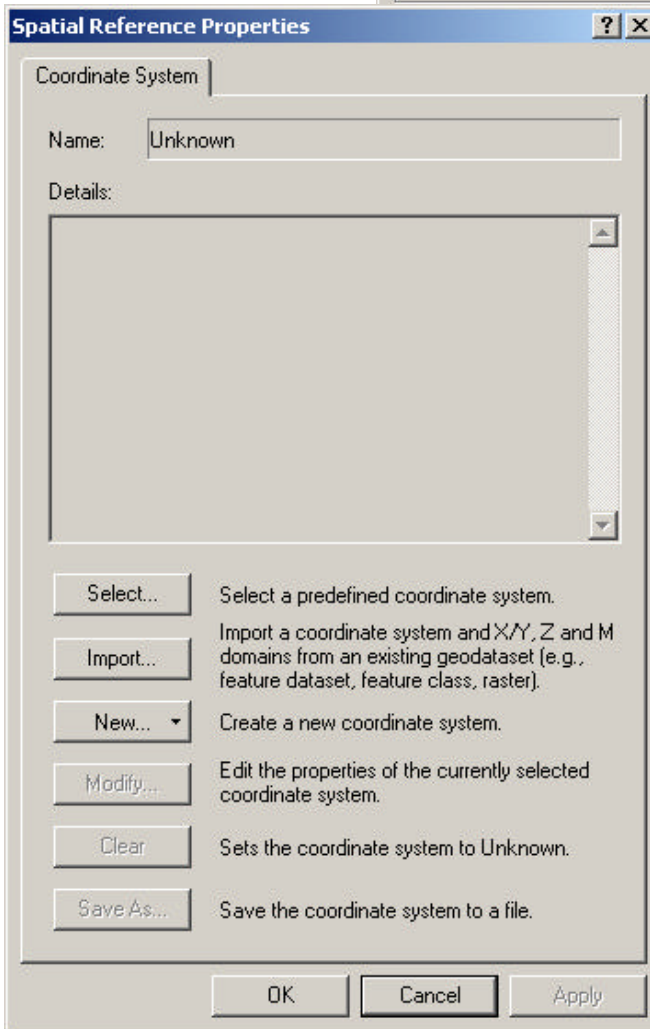
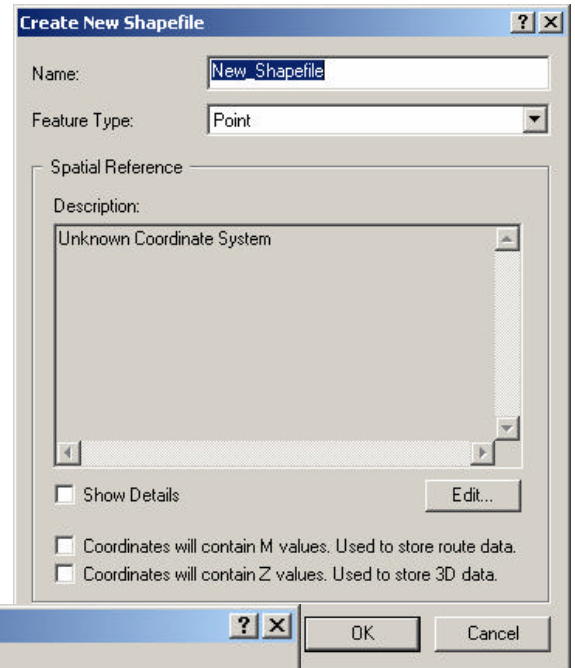
## Create a New Shapefile

1. Open ArcCatalog
2. Navigate to the folder that will store your new data layer
3. Right-click in the window on the right side
  - a. Select **New**
  - b. Select **Shapefile** as the type of data layer you want to create



## Assign Shapefile Properties

1. Enter a name for the new data layer
2. Select Feature Type: Point, Line, or Polygon from the drop-down list
3. Assign a coordinate system
  - a. Click **Edit**
  - b. In the Spatial Reference Properties, click **Import**
  - c. If necessary, navigate to a folder that contains existing shapefiles
  - d. Select a shapefile
  - e. Click **Add**
  - f. The details of the coordinate system are displayed in the Spatial Reference Properties window
  - g. Click **OK**
4. Click **OK** in the Create New Shapefile dialog window to create an empty data layer



*Features are added to the layer using the Editor tools in ArcMap.*

*Attribute fields can be added in ArcCatalog or ArcMap; Remember to indicate the type of field you are adding (text, integer, date, etc). Attribute data is edited in ArcMap after opening the Attribute Table.*