

Viewing PDF Maps in Adobe Reader 9

Updated: August 21, 2008

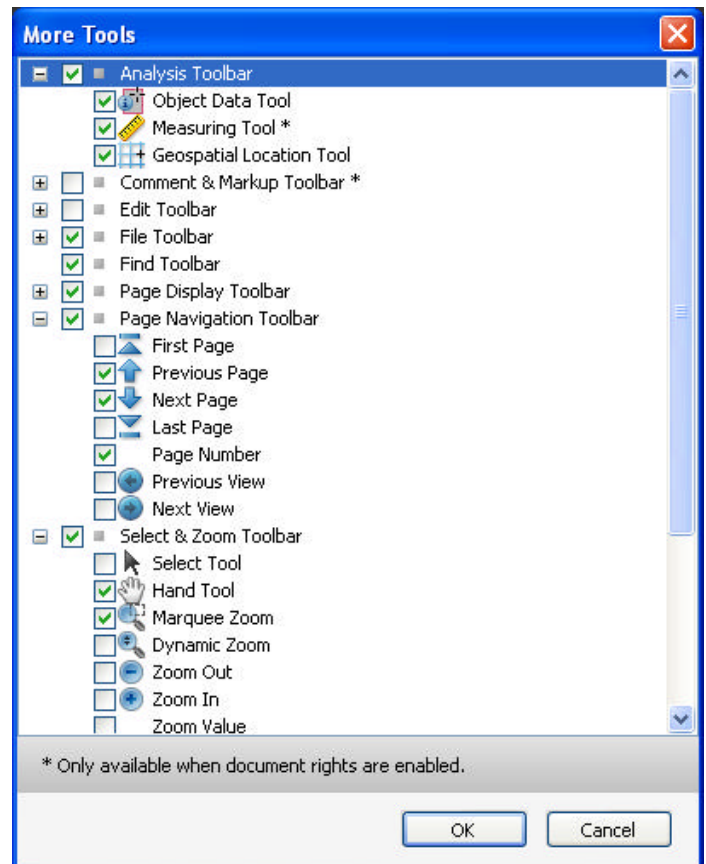
Software: ArcGIS 9.3 & Adobe Reader 9

Background

Maps exported from ArcMap 9.3 in PDF format have new functionality that allows the user to turn layers on/off, zoom in/out, and search for attribute data in Adobe Reader version 9 and higher. However, Adobe Reader must be customized in order to use some of these new tools. This document also describes how to control the layer display and how to efficiently search for attribute information.

Customize the Adobe Reader Interface

1. Open Adobe Reader 9
2. Click Tools menu → Customize Toolbars
3. Expand Analysis Toolbar
 - a. Check the box next to these tools:
 - i. Object Data Tool
 - ii. Measuring Tool
 - iii. Geospatial Location Tool
4. Expand Select & Zoom Toolbar
 - a. Check the box next to these tools:
 - i. Hand Tool
 - ii. Marquee Tool
 - iii. Zoom Out
 - iv. Zoom In
5. Click OK



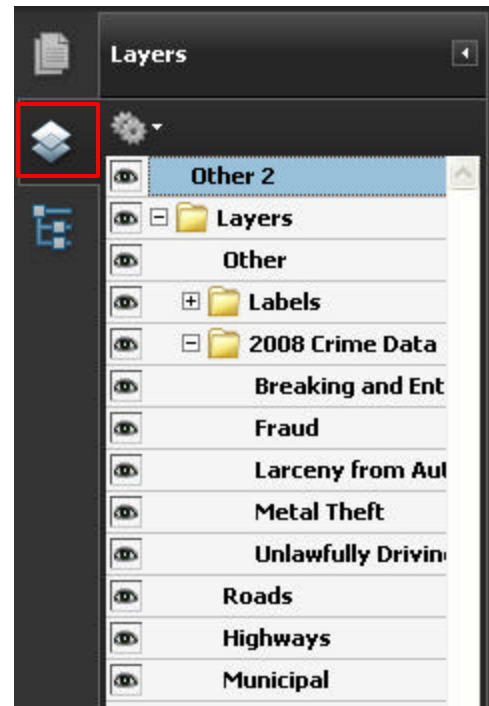
Using the Map Navigation Tools

1. To Zoom in/Out
 - a. Click the Marquee Zoom Tool
 - b. Draw a box around the area you want to zoom in to and then release the mouse button
2. To Pan
 - a. Click the Hand icon on the toolbar
 - b. Click the map to grab it then move the mouse and release the mouse button when the map is in position



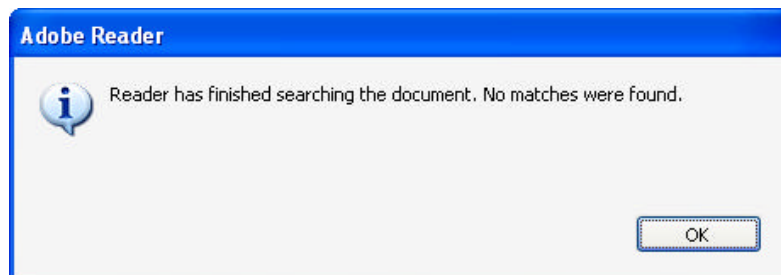
Controlling Layer Display

1. Click the Layers icon on the left side of the Adobe Reader window
2. Expand the folder icons until all layers are visible
3. Click the Eye icon to turn individual layers on/off



Searching for Attribute Information

1. Using the Find Tool to search through ALL data layers on the map
 - a. Enter a search word in the Find box
 - b. Hit Enter
 - c. A status bar appears so you can monitor the search.
 - d. If no data is found a message box appears. Click OK to exit the message window.

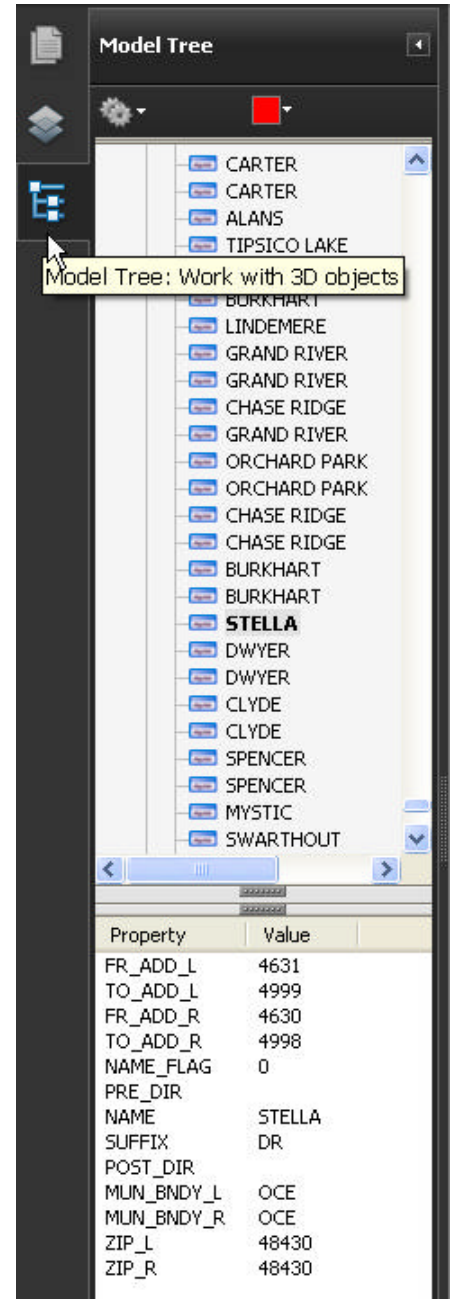


- e. If the search word is found in the attribute data, the first matching record will display in the results area on the bottom left side of the window.
 - i. To view additional matching records, hit Enter again and the next record will display in the results panel.
 - ii. The matching record in the Model tree also becomes bold and highlights in gray.
 1. Right-click in the bold record and select Zoom To Selection to view the location of the matching record on the map.

2. Focused search using the Find Tool
 - a. Click the Layer name in the Model tree that you want to search
 - b. Enter a word in the Find box
 - c. Click Enter to search for that word in the specified layer
 - d. Attributes for the matching record will display in the bottom left panel
 - e. To find additional matching records, hit enter again
 - f. If zoomed in on the map, the map will zoom to each matching record as you hit Enter

Viewing Attributes Using the Object Data Tool

1. Identifying on a feature in the map
 - a. Click the Object Data Tool
 - b. Click on the map feature that you want to view attributes for
 - i. The tool starts at the top of the Model Tree and selects all data on the map, which will be highlighted in red
 - c. Click on the map feature repeatedly until the attributes for the specific feature are displayed in the Results panel
 - i. Usually have to click 4 times to reach the feature level
2. Focused identify on specific layer
 - a. Click the Layer name in the Model tree that you want to identify features from
 - i. All features in that layer will highlight in red
 - b. Click on a specific feature in that layer to display the attribute information immediately in the results panel



Note: The size of the Model Tree and Results panels can be adjusted by clicking on the dark gray area at the top and bottom of each panel and dragging the panel up/down. This will allow you to display more records or attributes in each panel. The middle panel shown on the left side is not used so it can be completely hidden by the Model Tree and Results panels.