

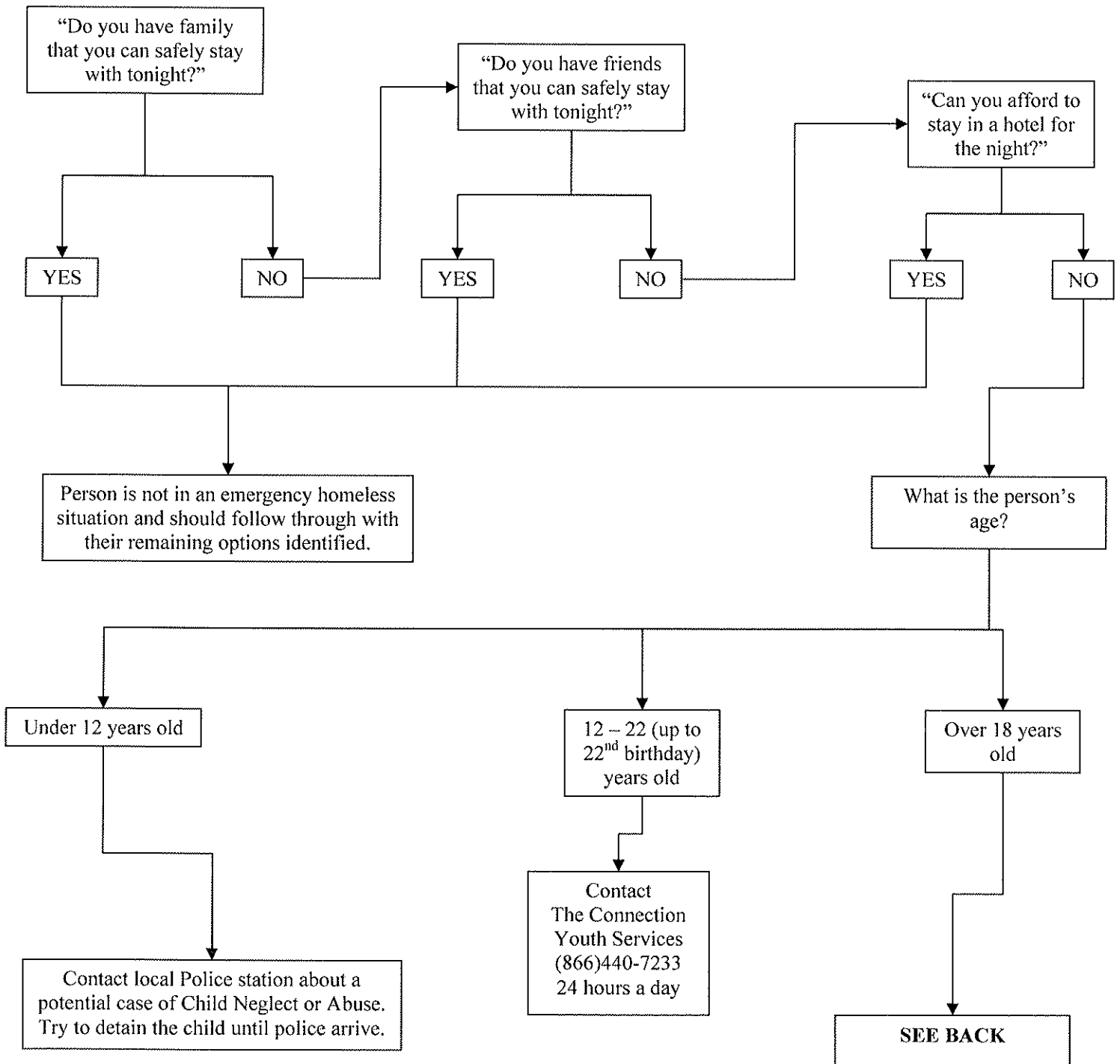


A First Response to Homeless Persons in Livingston County

This guide is provided as a resource tool for those who may find themselves acting as “*First Responders*” when encountering a person facing potential homelessness in Livingston County, Michigan. Examples of such persons would include emergency room staff, church pastors or volunteers, police and fire officers, human service agency personnel, etc.

A basic assumption is made that a *First Responder* is consulting this guide upon encountering an individual who has indicated in some way that they may be homeless and are in need of at least temporary and immediate shelter.

The following questions are provided to assist the *First Responder* in ensuring a potential homeless person has exhausted all options to obtain temporary shelter on their own and to determine the appropriate local agency to contact in each unique situation.



The following questions are to be used for the *First Responder* to determine the appropriate referral for temporary shelter assistance for families and homeless persons over age 18.

